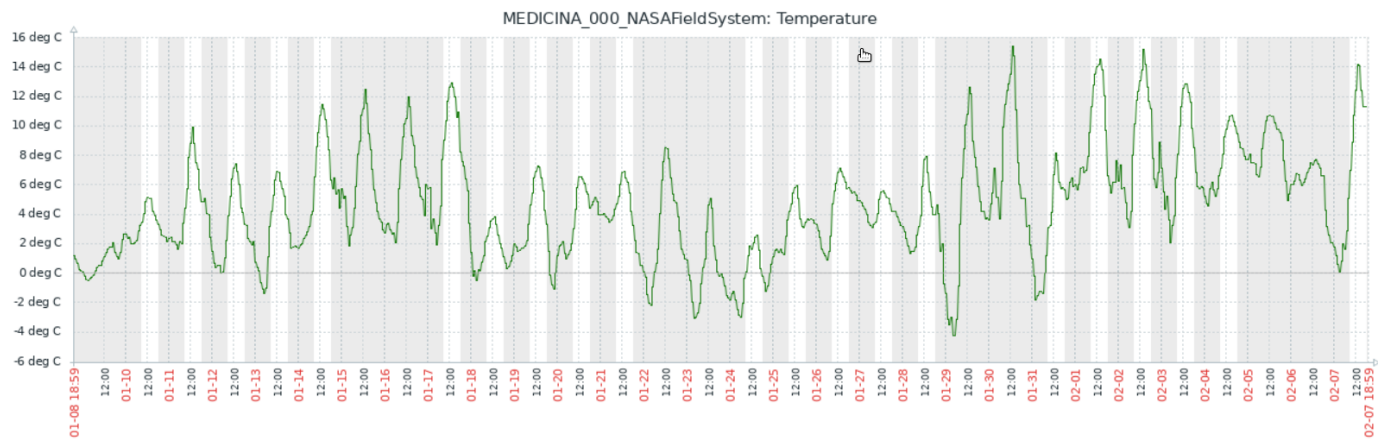
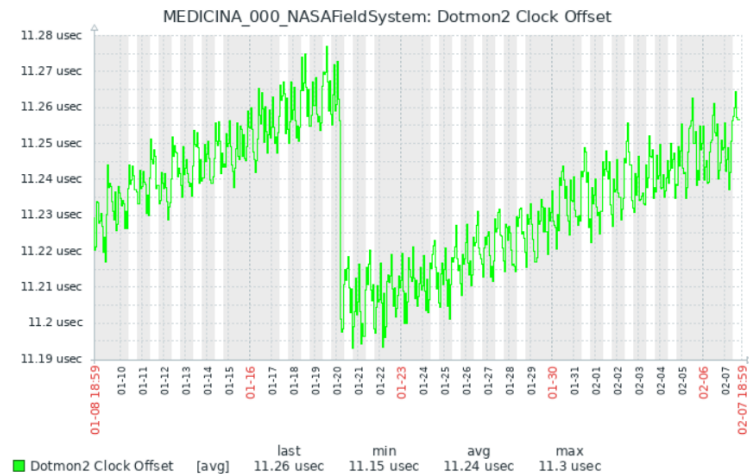
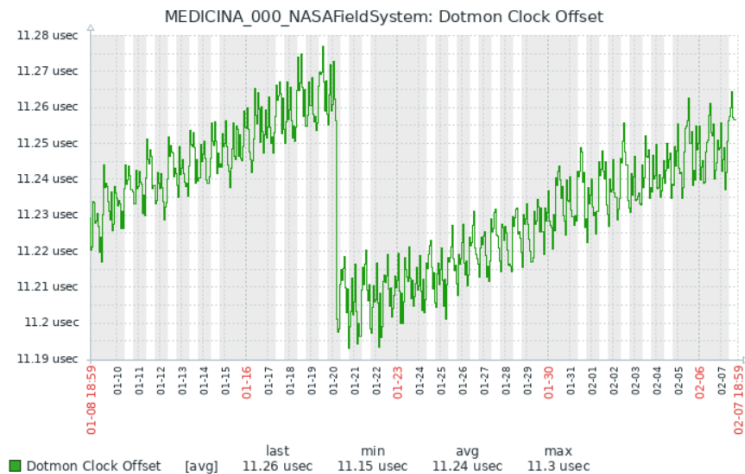


The real-time EVN Monitor

Aard Keimpema (keimpema@jive.eu)



EVN Monitor

- Real-time monitoring of station parameters
 - Weather, clock offsets, TSYS, etc.
- Identify issues during NME / eVLBI, as well as regular user experiments
- Originally developed by Alexander Neidhardt (Wz)
- Similar monitor exists for the IVS
- Based on Zabbix monitoring software
- Currently contributing: Medicina, Wettzell, and Yebes
- <https://evn-monitor.jive.eu>
 - Username: EVN Guest, Password: EVN Guest

Items

| Name | Key | | Name | Key |
|-----------------------------|---------------------------------|--|-----------------------------|-------------------------------|
| Antenna name | <i>ERC.ANTENNA</i> | | Azimuth | <i>ERC.AZIMUTH</i> |
| Cable | <i>ERC.CABLE</i> | | Catalog year | <i>ERC.CATALOGYEAR</i> |
| Checks | <i>ERC.CHECKS</i> | | Declination (text) | <i>ERC.DEC</i> |
| Dotmon Clock Offset | <i>ERC.DOTMON</i> | | Dotmon2 Clock Offset | <i>ERC.DOTMON2</i> |
| Elevation | <i>ERC.ELEVATION</i> | | Halt | <i>ERC.HALT</i> |
| Meteo Humidity | <i>ERC.HUMIDITY</i> | | IF1 system temperature | <i>ERC.IF1</i> |
| IF2 system temperature | <i>ERC.IF2</i> | | IF3 system temperature | <i>ERC.IF3</i> |
| IF4 system temperature | <i>ERC.IF4</i> | | Log file | <i>ERC.LOG</i> |
| Next time | <i>ERC.NEXTTIME</i> | | Right ascension (text) | <i>ERC.RA</i> |
| Rate | <i>ERC.RATE</i> | | Schedule | <i>ERC.SCHEDULE</i> |
| Source | <i>ERC.SOURCE</i> | | Meteo Temperature | <i>ERC.TEMPERATURE</i> |
| Time | <i>ERC.TIME</i> | | Tracking state | <i>ERC.TRACKINGSTATE</i> |
| Meteo Wind direction | <i>ERC.WINDDIRECTION</i> | | Meteo Wind speed | <i>ERC.WINDSPEED</i> |

Items

| Name | Key | | Name | Key |
|-------------------------------|---------------------------------|--|-------------------------------|---------------------------------|
| Antenna name | <i>ERC.ANTENNA</i> | | Azimuth | <i>ERC.AZIMUTH</i> |
| Cable | <i>ERC.CABLE</i> | | Catalog year | <i>ERC.CATALOGYEAR</i> |
| Checks | <i>ERC.CHECKS</i> | | Declination (text) | <i>ERC.DEC</i> |
| Dotmon Clock Offset | <i>ERC.DOTMON</i> | | Dotmon2 Clock Offset | <i>ERC.DOTMON2</i> |
| Elevation | <i>ERC.ELEVATION</i> | | Halt | <i>ERC.HALT</i> |
| Meteo Humidity | <i>ERC.HUMIDITY</i> | | IF1 system temperature | <i>ERC.IF1</i> |
| IF2 system temperature | <i>ERC.IF2</i> | | IF3 system temperature | <i>ERC.IF3</i> |
| IF4 system temperature | <i>ERC.IF4</i> | | Log file | <i>ERC.LOG</i> |
| Next time | <i>ERC.NEXTTIME</i> | | Right ascension (text) | <i>ERC.RA</i> |
| Rate | <i>ERC.RATE</i> | | Schedule | <i>ERC.SCHEDULE</i> |
| Source | <i>ERC.SOURCE</i> | | Meteo Temperature | <i>ERC.TEMPERATURE</i> |
| Time | <i>ERC.TIME</i> | | Tracking state | <i>ERC.TRACKINGSTATE</i> |
| Meteo Wind direction | <i>ERC.WINDDIRECTION</i> | | Meteo Wind speed | <i>ERC.WINDSPEED</i> |

Upload data

- Requires no additional software
- Data is send with local script over ssh
- Recommended update frequency: 1 minute
- For example:

```
echo SITENAME_000_NASAFIELDSystem ERC.DOTMON `date +%s` \|-1.6666\| |  
ssh USERNAME@evn-monitor.jive.eu zabbix_sender -vv -z 127.0.0.1 -p  
10052 -T -i -
```

Upload data

- Requires no additional software
- Data is send with local script over ssh
- Recommended update frequency: 1 minute
- For example:

| SITE NAME | Item | Date (unix time) | Value |
|---|-------------------------|-------------------------|--------------------------|
| <code>echo SITENAME_000_NASAFldSystem</code> | <code>ERC.DOTMON</code> | <code>`date +%s`</code> | <code>\"-1.6666\"</code> |
| <code> ssh USERNAME@evn-monitor.jive.eu zabbix_sender -vv -z 127.0.0.1 -p 10052 -T -i -</code> | | | |

Upload data

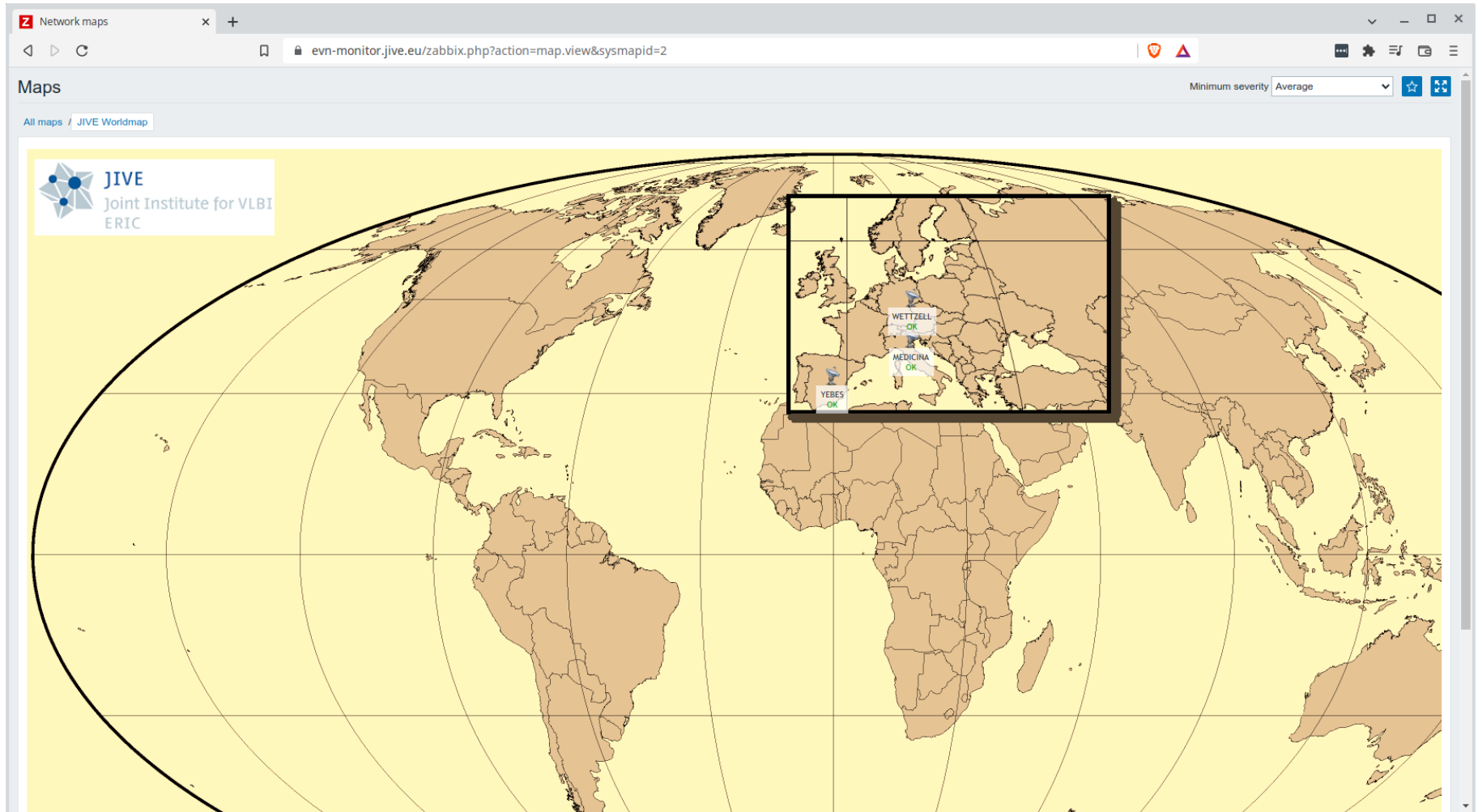
- Requires no additional software
- Data is send with local script over ssh
- Recommended update frequency: 1 minute
- For example:

| SITE NAME | Item | Date (unix time) | Value |
|--|-------------------------|-------------------------|----------------------------|
| <code>echo SITENAME_000_NASAFIELDSystem</code> | <code>ERC.DOTMON</code> | <code>`date +%s`</code> | <code>\"-1.6666\" </code> |

```
ssh USERNAME@evn-monitor.jive.eu zabbix_sender -vv -z 127.0.0.1 -p  
10052 -T -i -
```

Actual command that stores value in Zabbix
(run on evn-monitor)

DEMO



Start contributing

- Email ssh public key to keimpema@jive.eu
- You'll receive username and short manual by Alexander Neidhardt
- <https://evn-monitor.jive.eu>
 - Username: EVN Guest, Password: EVN Guest